



**Mandatory Commercial
Organics Recycling (AB 1826)
ESJPA Meeting 5/21/15**



Generator Identification Tool



How to Identify Covered Generators without doing a waste characterization for each business?

1. General Approach to Generator Identification
2. CalRecycle's Approach
3. Alternative Approaches
4. Identification of the Actual Generators
5. Available Resources
6. Suggested Approach to Multifamily



General Approach to Generator Identification

Step 1: Determine and pick a general criterion (i.e., # of employees) that can be applied to each business group

Step 2: Cross-check the criterion with business license data/business database to identify the likely *existing* generators in your jurisdiction

Step 3: Conduct site visit to business and observe/confirm organic generation (or see if hauler already has this data)



CalRecycle's Approach

- ▶ Using # of Employees to Estimate 8 cu yd of Organic Waste Generation by Business Type (See handout #4 on meeting notice for sample table and calculation method)
 - Using 2014 Waste Characterization Study Data*
 - CalRecycle Business Groups
 - Multi Family Dwellings – will discuss later



Alternative Approaches

- ▶ Open to alternative approach: Jurisdictions need to provide sufficient information/data for CalRecycle to evaluate the approach
 - Reasonableness
 - Feasibility
- ▶ Contact Kaoru Cruz (lamd@calrecycle.ca.gov) or your LAMD liaison
(e-mail subject line should be “AB 1826 Alternative Method”)



CalRecycle's Approach for Identification of Actual Generators (Cont'd)

- ▶ Using approximate cut-off for the generators; jurisdictions then need to determine which generators are covered by AB 1826
 - CalRecycle approach uses # of employees to determine cut-off
- ▶ Cross check with
 - Business data
 - Business license information
 - Hauler's disposal/diversion information



Available Resources for Jurisdiction-Specific Data

- ▶ Employment Development Department – Labor Market Information Division (List of businesses by type/employee range – see Employer Search Tool link on handout)
 - <http://www.labormarketinfo.edd.ca.gov/aspdotnet/databrowsing/empgeog.aspx?menuchoice=emp&searchtype=geography>
- ▶ Private Business List Database Services - detailed information on businesses such as range of number of employees in jurisdiction (subscription base)
 - ReferenceUSA (Infogroup Government Division), Dun & Bradstreet, etc.
- ▶ Business license data – some jurisdictions may capture details on # employees

➔ Local Search Results

About 7,780 results (0.35 seconds)

[OES Employment and Wages](#)

The Occupational Employment Statistics and Wages (OES) program produces ... Wage data for all **geographical areas** have been updated to the first quarter of ...

www.labormarketinfo.edd.ca.gov/.../oes-employment-and-wages.html

[Quarterly Census of Employment and Wages \(QCEW\)](#)

Quarterly Census of Employment and Wages (QCEW) ... Select Geography: a custom tabulation for detailed **geographic areas** for economic development and ...

www.labormarketinfo.edd.ca.gov/qcew/qcew-select.asp

[Mechanical Engineers](#)

Estimated Employment and Projected Growth Mechanical Engineers. **Geographic Area** (Estimated Year-Projected Year), Estimated Employment, Projected

www.labormarketinfo.edd.ca.gov/.../Detail.aspx?...Geography...



[Geographic Information Systems Maps](#)

Local Area Unemployment Statistics (LAUS) annual average county ... These maps show Annual Average Agricultural Employment for 2007 through 2012.

www.labormarketinfo.edd.ca.gov/.../Geographic_Information_Systems_Maps.html

[Overview - Labor Market Information Division](#)

LMI by Geography. California ... More Geography Information ... The Employment Development Department is an equal opportunity employer/program. Auxiliary ...

www.labormarketinfo.edd.ca.gov/

[Dietitians and Nutritionists](#)

Salaries vary by years in practice, education level, and **geographic region**. ... Employment growth may be curbed if some **employers** substitute other workers, ...

www.labormarketinfo.edd.ca.gov/.../Detail.aspx?...Geography...

[Employment by Industry Data](#)

These data are also called the Industry Employment – Official Estimates. ... To select industry data for selected industries for all **geographic areas**, use the ...

www.labormarketinfo.edd.ca.gov/.../Employment_by_Industry_Data.html

[Geographic Area](#)

Employers by Geographic Area. Help with this page? Select the State or a County. Select an Area: State of California, Alameda County, Alpine County, Amador ...

www.labormarketinfo.edd.ca.gov/.../empgeog.aspx?...geography



State of California

Employment Development Department

[Contact EDD](#) | [Forms & Publications](#) | [Online Services](#)

Search

This Site California

[Home](#)

[Unemployment](#)

[Disability](#)

[Jobs & Training](#)

[Payroll Taxes](#)

[Labor Market Info](#)



Employers by Geographic Area

[Back](#)

[New Search](#)

[? Help with this page?](#)

Select the State or a County

Select an Area:

Trinity County	^ v
Tulare County	
Tuolumne County	
Ventura County	
Yolo County	
Yuba County	

[Search](#)



(Click on the map to enlarge)



State of California

Employment Development Department

[Contact EDD](#) | [Forms & Publications](#) | [Online Services](#)

Search

This Site California

[Home](#)

[Unemployment](#)

[Disability](#)

[Jobs & Training](#)

[Payroll Taxes](#)

[Labor Market Info](#)

Employers by Geographic Area

[Back](#)

[New Search](#)

[View Search Selections](#)

[? Help with this page?](#)

Option 1. Search for an Industry by Keyword

Type your keywords in the box and click the "Search" button

[Search](#)

Option 2. Select a NAICS Industry Sector

Please make a selection from the industry sector (2 digit) listbox below and click the Search button or search by keyword using the option above.

Sector	Title
44	Retail Trade (44 & 45)
48	Transportation and Warehousing (48 & 49)
51	Information
52	Finance and Insurance

[Search](#)



State of California

Employment Development Department

[Contact EDD](#) | [Forms & Publications](#) | [Online Services](#)

Search

This Site California

[Home](#)

[Unemployment](#)

[Disability](#)

[Jobs & Training](#)

[Payroll Taxes](#)

[Labor Market Info](#)

Employers by Geographic Area

[Back](#)

[New Search](#)

[View Search Selections](#)

[? Help with this page?](#)

Select a NAICS Industry Group

Select an industry below and click on the "Select Detail Industries" button to refine your search or "View Employer List" to list employers in that industry.

Group Title (Number of Employers in Yolo County)

4442 Lawn & Garden Equipment/Supplies Stores (13)

4451 Grocery Stores (95)

4452 Specialty Food Stores (39)

4453 Beer, Wine, and Liquor Stores (20)

[Select Detail Industries](#)

OR

[View Employer List](#)

[Back to Top](#) | [Contact EDD](#) | [Conditions of Use](#) | [Privacy Policy](#) | [Equal Opportunity Notice](#)

The Employment Development Department is an equal opportunity employer/program.





Employer Search Results

[Back](#) [New Search](#) [Printer Friendly Version](#)

there are **95 employers** matching your selection criteria.

Page 1 of 4 (25 results/page) [\[Next\]](#)

Go To Page: [GO](#)

Name	Address	City	Industry	Size Range
7-ELEVEN	E Main St	Woodland	Convenience Stores	1-4 employees
7-ELEVEN	Jefferson Blvd	West Sacramento	Convenience Stores	1-4 employees
7-ELEVEN	Cottonwood St	Woodland	Convenience Stores	1-4 employees
7-ELEVEN	L St	Davis	Convenience Stores	5-9 employees
7-ELEVEN	Lake Ct	West Sacramento	Convenience Stores	5-9 employees
Aisle1	E Gibson Rd	Woodland	Supermarkets and Other Grocery Stores	1-4 employees
Amin Foods	W Capitol Ave	West Sacramento	Supermarkets and Other Grocery Stores	1-4 employees
Ampm	Russell Blvd	Davis	Convenience Stores	5-9 employees
Ampm	W Main St	Woodland	Convenience Stores	5-9 employees
Ampm	Reed Ave	West Sacramento	Convenience Stores	5-9 employees
Ampm	County Road 102	Woodland	Convenience Stores	5-9 employees
Ampm	Harbor Blvd	West Sacramento	Convenience Stores	5-9 employees
Ampm	Mace Blvd	Davis	Convenience Stores	10-19 employees
Ariana Food Mart	W Capitol Ave	West Sacramento	Convenience Stores	1-4 employees
Arteaga's Starlite Supermarket	Sacramento Ave	Broderick	Supermarkets and Other Grocery Stores	10-19 employees
Bei Air Markets	W Capitol Ave	Broderick	Supermarkets and Other Grocery Stores	250-499 employees
Berezka Market	Sacramento Ave	West Sacramento	Supermarkets and Other Grocery Stores	1-4 employees
Berryessa Sporting Goods-Mini	E Grant Ave	Winters	Supermarkets and Other Grocery Stores	10-19 employees
Bridgeview Market	3rd St	West Sacramento	Supermarkets and Other Grocery Stores	1-4 employees
Bryte Way Market	Lisbon Ave	West Sacramento	Supermarkets and Other Grocery Stores	5-9 employees

Note: EDD changed the database format after the workshops. There is no longer "View Filter Selections" link.

Employer Search Results

[Back](#) [New Search](#) [Printer Friendly Version](#)

there are **95 employers** matching your selection criteria.

Page 1 of 4 (25 results/page) [\[Next\]](#)

Go To Page: [GO](#)

Name	Address	City	Industry	Size Range
Lighthouse Market & Deli	C St	Broderick	Supermarkets and Other Grocery Stores	5-9 employees
Bel Air Markets	W Capitol Ave	Broderick	Supermarkets and Other Grocery Stores	250-499 employees
Arteaga's Starlite Supermarket	Sacramento Ave	Broderick	Supermarkets and Other Grocery Stores	10-19 employees
Holland Market	Netherlands Ave	Clarksburg	Supermarkets and Other Grocery Stores	1-4 employees
Trader Joe's	Russell Blvd	Davis	Supermarkets and Other Grocery Stores	50-99 employees
Nugget Markets	E Covell Blvd	Davis	Supermarkets and Other Grocery Stores	100-249 employees
Safeway	Cowell Blvd	Davis	Supermarkets and Other Grocery Stores	100-249 employees
Westlake Iga		Davis	Supermarkets and Other Grocery Stores	20-49 employees
Farmers Market	2nd St	Davis	Supermarkets and Other Grocery Stores	1-4 employees
Kathmandu Kitchen Foods Inc	G St	Davis	Supermarkets and Other Grocery Stores	1-4 employees
Safeway	W Covell Blvd	Davis	Supermarkets and Other Grocery Stores	50-99 employees
Quick Shop Market	E 8th St	Davis	Supermarkets and Other Grocery Stores	1-4 employees
Davis Farmers Market	C St	Davis	Supermarkets and Other Grocery Stores	5-9 employees
Davis Food Co-Op	G St	Davis	Supermarkets and Other Grocery Stores	100-249 employees
Nugget Markets	Mace Blvd	Davis	Supermarkets and Other Grocery Stores	50-99 employees
Olive Drive Market	Olive Dr	Davis	Supermarkets and Other Grocery Stores	1-4 employees
Kim's Mart	4th St	Davis	Supermarkets and Other Grocery Stores	5-9 employees
Grocery Outlet	E 8th St # B	Davis	Supermarkets and Other Grocery Stores	20-49 employees
Whole Foods Market	1st St # 1	Davis	Supermarkets and Other Grocery Stores	100-249 employees
Ampm	Russell Blvd	Davis	Convenience Stores	5-9 employees

Note: There is no longer filtering feature for “by Firm Size” nor “By City.” However, you can still sort each column (i.e. by City).

there are **95 employers** matching your selection criteria.

Page 1 of 4 (25 results/page) [Next]

Go To Page: GO

Name	Address	City	Industry	Size Range
Lighthouse Market & Deli	C St	Broderick	Supermarkets and Other Grocery Stores	5-9 employees
Bel Air Markets	W Capitol Ave	Broderick	Supermarkets and Other Grocery Stores	250-499 employees
Arteaga's Starlite Supermarket	Sacramento Ave	Broderick	Supermarkets and Other Grocery Stores	10-19 employees
Holland Market	Netherlands Ave	Clarksburg	Supermarkets and Other Grocery Stores	1-4 employees
Trader Joe's	Russell Blvd	Davis	Supermarkets and Other Grocery Stores	50-99 employees
Nugget Markets	E Covell Blvd	Davis	Supermarkets and Other Grocery Stores	100-249 employees
Safeway	Cowell Blvd	Davis	Supermarkets and Other Grocery Stores	100-249 employees
Westlake Iga		Davis	Supermarkets and Other Grocery Stores	20-49 employees
Farmers Market	2nd St	Davis	Supermarkets and Other Grocery Stores	1-4 employees
Kathmandu Kitchen Foods Inc	G St	Davis	Supermarkets and Other Grocery Stores	1-4 employees
Safeway	W Covell Blvd	Davis	Supermarkets and Other Grocery Stores	50-99 employees
Quick Shop Market	E 8th St	Davis	Supermarkets and Other Grocery Stores	1-4 employees
Davis Farmers Market	C St	Davis	Supermarkets and Other Grocery Stores	5-9 employees
Davis Food Co-Op	G St	Davis	Supermarkets and Other Grocery Stores	100-249 employees
Nugget Markets	Mace Blvd	Davis	Supermarkets and Other Grocery Stores	50-99 employees
Olive Drive Market	Olive Dr	Davis	Supermarkets and Other Grocery Stores	1-4 employees
Kim's Mart	4th St	Davis	Supermarkets and Other Grocery Stores	5-9 employees
Grocery Outlet	E 8th St # B	Davis	Supermarkets and Other Grocery Stores	20-49 employees
Whole Foods Market	1st St # 1	Davis	Supermarkets and Other Grocery Stores	100-249 employees
Ampm	Russell Blvd	Davis	Convenience Stores	5-9 employees
Circle K	Lake Blvd	Davis	Convenience Stores	5-9 employees
Save Mart	Anderson Rd	Davis	Supermarkets and Other Grocery Stores	50-99 employees
Ampm	Mace Blvd	Davis	Convenience Stores	10-19 employees
7-ELEVEN	L St	Davis	Convenience Stores	5-9 employees

- Select a business to meet the # of employees cut off in the Generator ID tool
- Click the name of the business to see the business information




Employer Details

[Back](#)

[New Search](#)



[Printer Friendly Version](#)

Employer Name:	Davis Food Co-Op
Business Description:	Grocers-Retail
Employer Address:	620 G St Davis, CA 95616-3726 Map This Address
Mailing Address:	N/A
Contact:	Mike Simpson, Hr Executive
Telephone:	530-758-2667 
Website:	DAVISFOOD.COOP (Links to external websites are for informational purposes only. The information on external websites is believed accurate but not guaranteed.)
Employer Size Class:	100-249 Employees
Industry Description:	Supermarkets and Other Grocery Stores (NAICS code: 445110) This industry comprises establishments generally known as supermarkets and grocery stores primarily engaged in retailing a general line of food, such as canned and frozen foods; fresh fruits and vegetables; and fresh and prepared meats, fish, and poultry.

Related Links

[Local Area Profile](#)



Employer information is provided by infogroup®, Omaha, NE, 800-555-5211 . Copyright © 2015. All Rights Reserved.





Suggested Approach to Multifamily

- ▶ No tool from CalRecycle is available to determine cutoff (e.g., # number of units) for multifamily complexes (MFD), due to:
 - Data limitations (landscapers take green waste away after their work, could not capture accurate amount, property managers cannot estimate amount)
 - Uniqueness of MFD (too many variations of MFD, lots of greenery to no landscaping, hard to average out)



Types of Multifamily





Suggested approach to MFDs (cont'd)

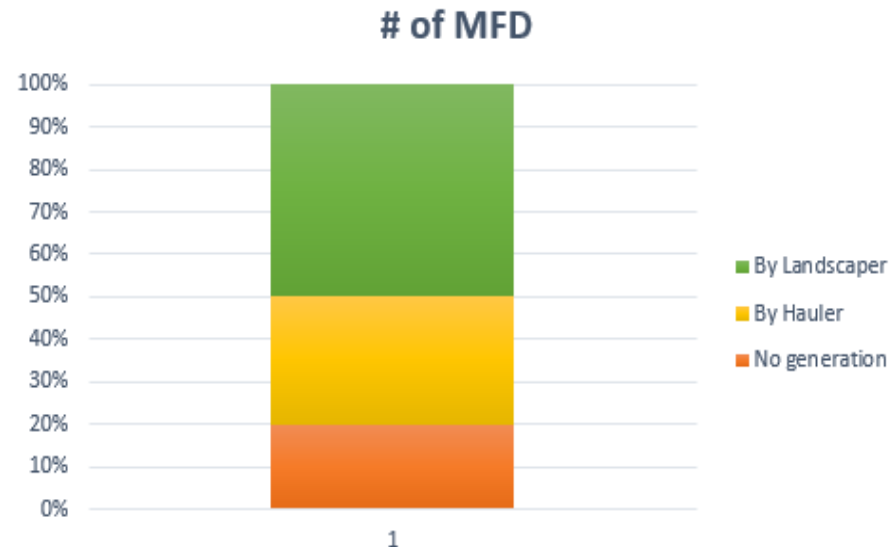
- ▶ One approach: jurisdictions could conduct outreach/education/monitoring for multifamily complexes (MFD) that have 5 units or more
 - MFDs are to recycle grass clipping, branches/ pruning waste, non-hazardous wood waste
 - Might mean that you are informing complexes of the law even if they don't generate 8 or 4 cy of organic material
 - Benefit is that you are not having to go through a process of identifying how much organic material (excluding food/food soiled paper) the complex generates
- ▶ Or, jurisdictions can conduct waste assessments at complexes so they can target MFDs generating the threshold amount
- ▶ CalRecycle would like to solicit ideas/feedback on how to determine covered MFDs



Suggested Monitoring Approach


To identify how many MFDs are in compliance:

- ▶ Hauler's data (MFD subscription to their organic collection service)
 - Complexes that don't have trees, grass, etc.
 - Served by a landscaper/gardener
 - Possibly phase-in approach





▶ Comments/Questions?

A close-up photograph of two hands gently holding a small green seedling with several leaves in a dark pot of soil. The hands are positioned around the pot, with fingers visible. The background is a soft, out-of-focus light blue.

Electronic Annual Report (EAR)



Electronic Annual Report (EAR) Reporting

- ▶ First Annual Report that will include reporting on AB 1826 will be 2016 Annual Report (**due August 1, 2017**)
 - Separate section within EAR
 - Update on program development and implementation of identification, education/outreach, monitoring each year
 - Optional reporting for rural that applied for exemption
- ▶ Specific provisions for reporting on implementation of jurisdiction's program



Summary of Information Required in 2016-2020 EARs

2016 EAR Jurisdiction reports on:

- Implementation of its organic waste recycling program **on and after January 1, 2016**
- Efforts to **identify** covered entities that generate 8 or more cubic yards/week of organic material
- **Education, outreach, and monitoring** provided to covered entities


2017 – 2020 EAR:

- As above, according to each year's threshold



Numeric Information for the Reporting Year - Businesses

- ▶ Number of covered businesses
- ▶ Number of covered businesses that are recycling organic waste
- ▶ (Optional) If available provide tonnage of organic material diverted by businesses



Numeric Information for the Reporting Year - Multifamily

- ▶ Number of covered multifamily complexes
- ▶ Number of covered multifamily complexes that are recycling green waste, landscape and pruning waste, and nonhazardous wood waste
 - ▶ i.e., all organic waste except food waste or food soiled paper
- ▶ **(Optional)** If available provide tonnage of material diverted by multifamily complexes



Narrative Information for the Reporting Year

- ▶ Describe method(s) used to identify covered entities
 - If data is not available, explain why, and how and when the data will be gathered



Education and Outreach for the Reporting Year

- ▶ Describe education and outreach methods, including efforts by both jurisdiction & hauler(s):
 - Electronic
 - Print
 - Direct Contact
- ▶ If applicable, describe challenges encountered in implementing education and outreach



Monitoring for the Reporting Year

- ▶ Explain how generators not in compliance with AB 1826 were notified about the law, and how to comply with the law
- ▶ If applicable, please describe any challenges encountered in implementing monitoring



Additional Information That May or May Not Be Applicable

If applicable:

- Enforcement efforts
- Additional certification requirements for self-haulers
- Exemptions



Facility Infrastructure— Existing/Planned

- ▶ The following shall be reported for compost, anaerobic digestion and chip and grind facilities, and may include other facilities that recycle organic waste per PRC Section 42649.82(d)
 - Name nearby **existing organic waste recycling facilities** and **available capacities**;
 - Describe existing solid waste/organic waste recycling facilities within jurisdiction that could be **expanded** to include **organic waste processing**;
 - Describe efforts to develop **new private or public regional organics facilities**, including project timeline;
 - List **closed or abandoned sites** that could be developed into organics facilities;



Facility Infrastructure— Existing/Planned (Continued)

- Describe **other nondisposal opportunities or markets** (e.g., food donation, on-site composting, etc.) available in the jurisdiction;
- Confirm if **appropriate local zoning and permit requirements are in place** to locate new organic waste recycling facilities, or describe any **limitations to site new facilities** if applicable;
- Describe any **incentives** available to develop new organic facilities within the jurisdiction.



Barriers

- ▶ Address any known barriers to siting or expanding organic recycling facilities in the area:
 - Availability of markets,
 - Budgetary issues,
 - Low population density,
 - Distance to markets, or
 - Cost to process material is prohibitive due to small amount of material, etc.

- ▶ For identified barriers that are in jurisdiction's control, provide summary of jurisdiction's plan to remedy barriers [PRC Section 49649.82 (d) (1) (B)]



Wrap Up

- ▶ Training will be provided to Jurisdictions in Spring 2017 for Annual Report submittal which begins in August 1, 2017.
- ▶ Mock-ups for annual reporting will be posted on the AB 1826 website starting in 2016.



▶ Comments/Questions?



Commercial Generator Examples



How Much Organic Material?

- Statewide Disposal
 - ~30 million tons disposed annually
 - ~10 million tons compost/AD/mulch
 - ~5 million tons food waste
- Commercial Disposal
 - ~1/3 can be composted/digested/mulched
 - Food is roughly 2/3 of commercial organics
- 2014 Waste Characterization Study coming soon!



2014 Waste Characterization Study

- Disposal facility-based waste characterization
- Commercial Generator-based characterization of commercial 'black bin' waste
- Source Separation: Blue and Green Bins
- Comprehensive ***Diversion*** Data from Business Groups



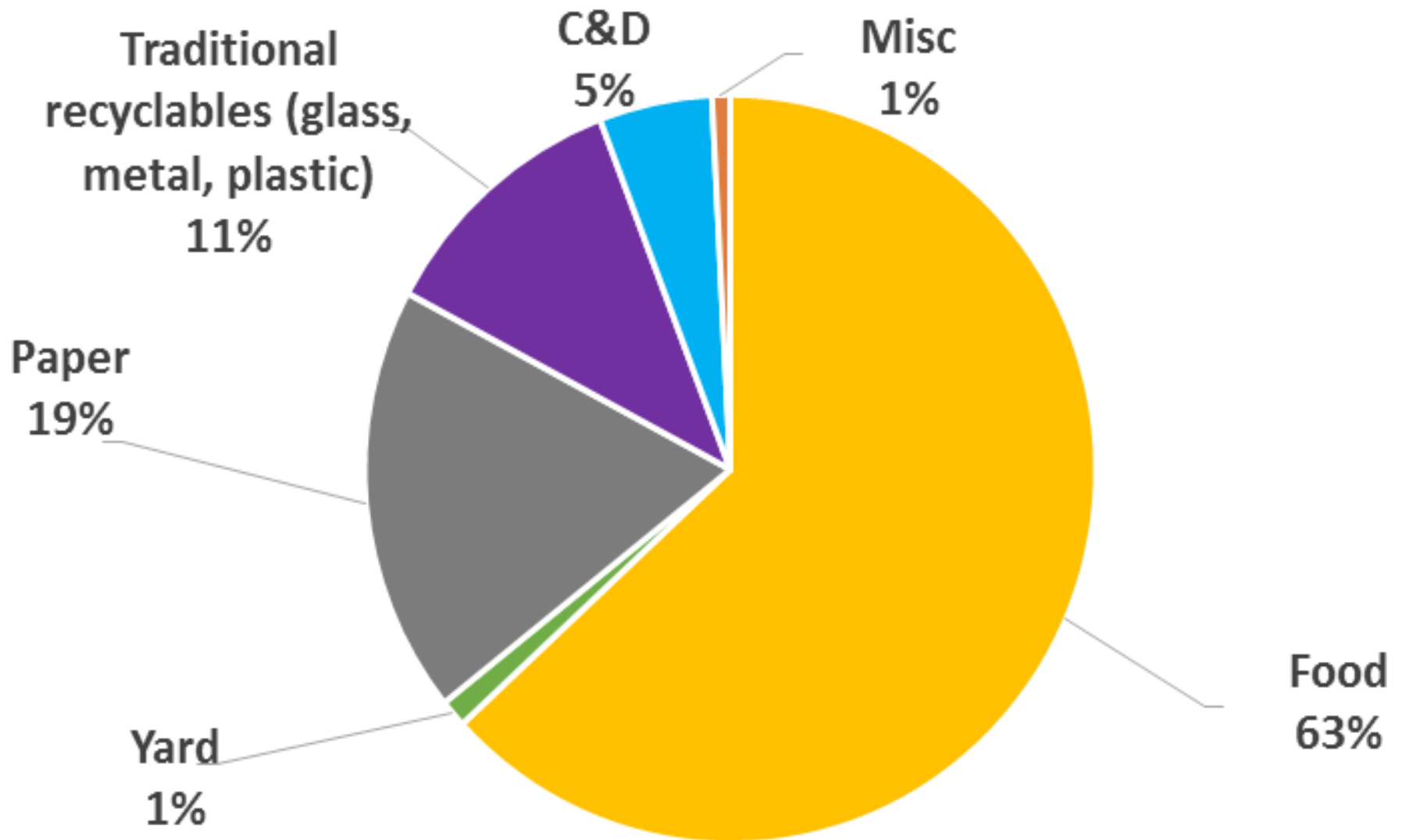
Examples of Commercial Generators

- Grocery Stores
- Hotels
- Restaurants
- Schools & Universities
- Venues & Stadiums
- Construction & Demolition

Grocery Stores



Grocery Stores Disposal Characterization





Options for Grocery Stores

- Partner with a food bank or food rescue organization
- Back-haul food material to distribution center and send to large-scale composting or AD facility
- Contract with a hauler to provide separate collection for inedible food

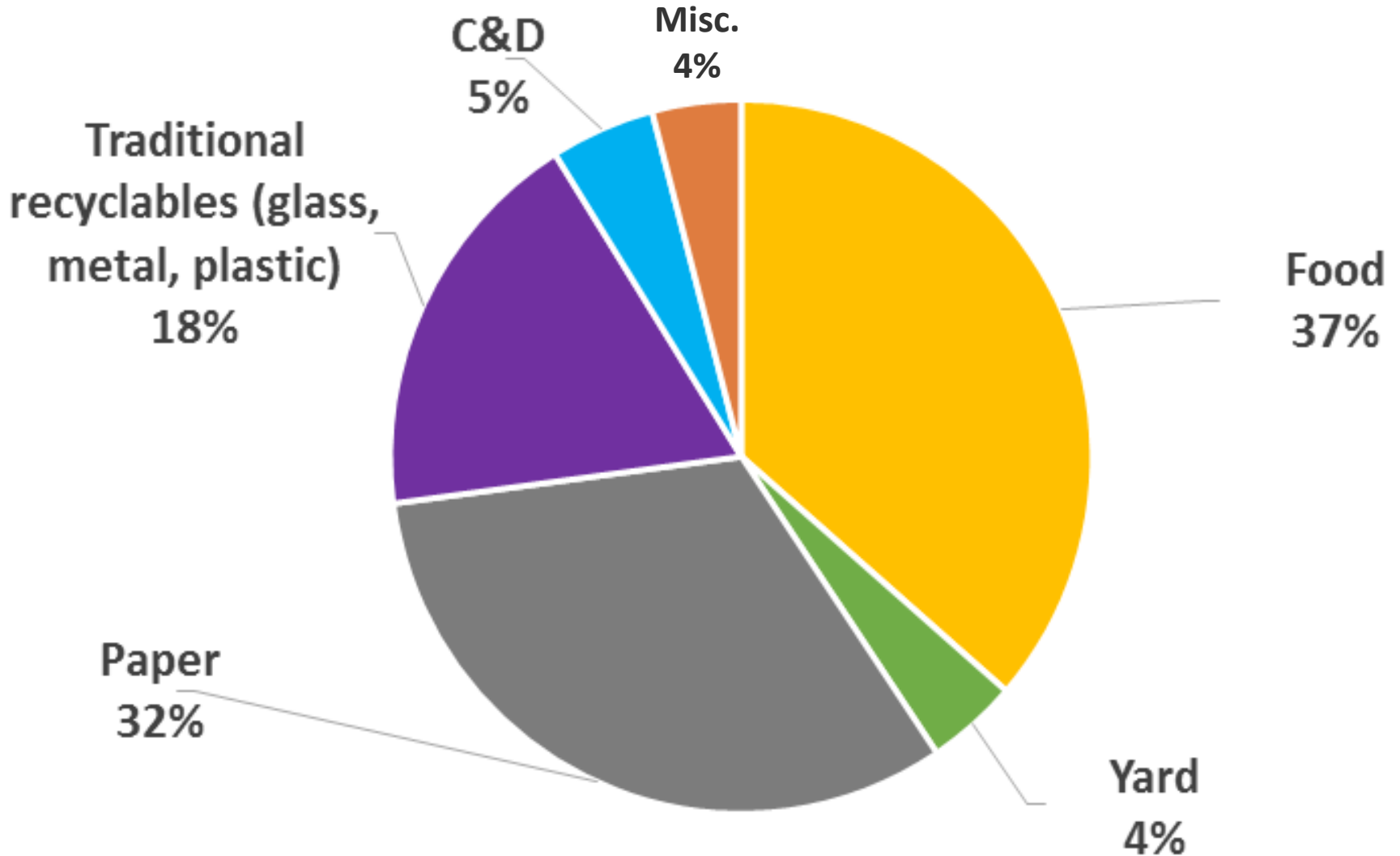
Anaerobic Digestion: Ralph's & Food 4 Less distribution center, *150 tpd food* Compton, LA County



Hotels



Hotels Disposal Characterization





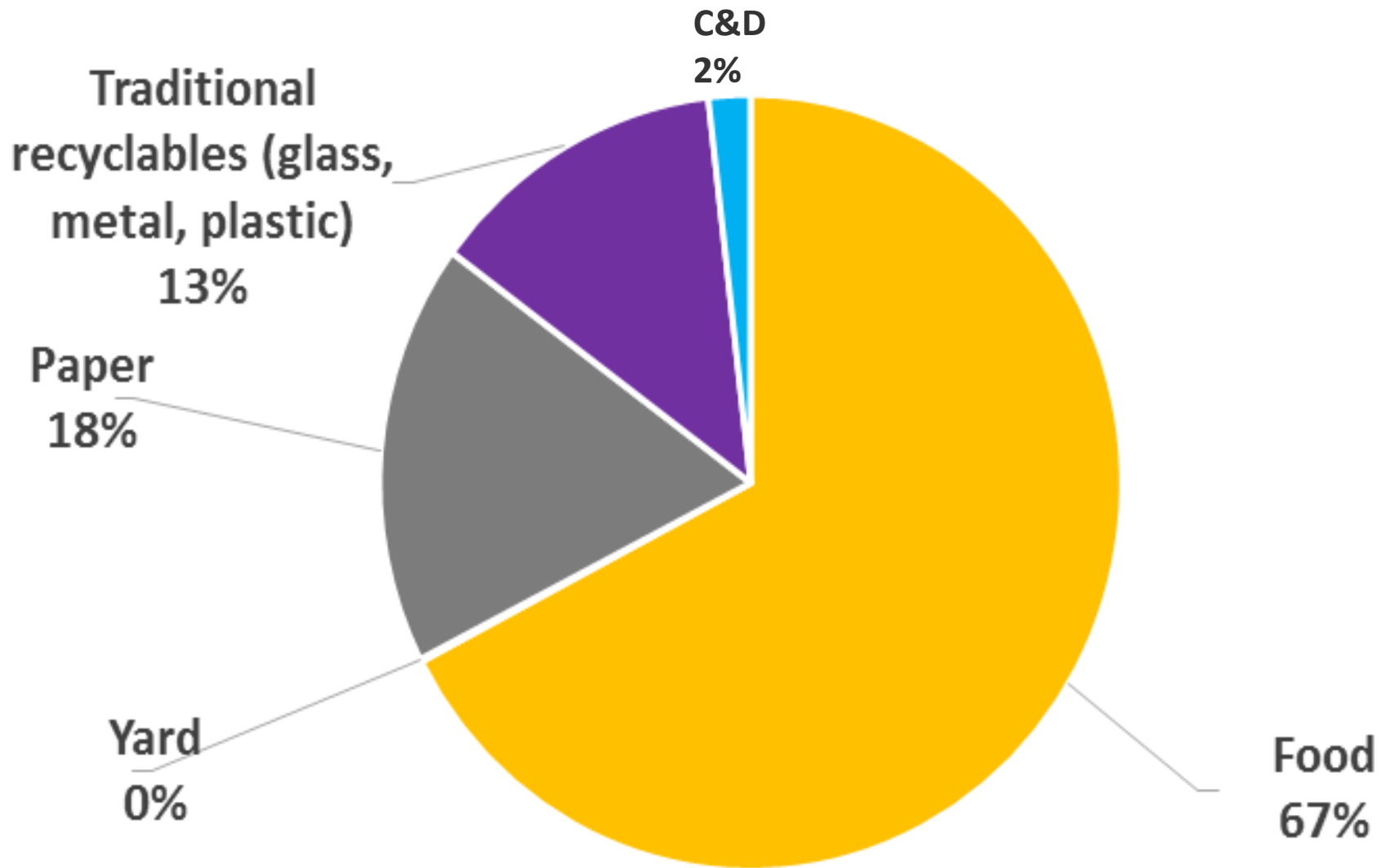
Options for Hotels

- Hotels with restaurants may partner with a food rescue organization to donate edible food
- Tax deductions available; record keeping essential
- Work with hauler to send food materials to compost or AD Facility
- Landscaping contracts specify that all green material must be recycled
- Compost yard waste on site using in-vessel technology

Restaurants



Full Service Restaurants Disposal Characterization





Options for Restaurants

- Reduce food waste by right-sizing portions, better management of perishable ingredients
- Donate edible food to food rescue organizations
- Work with hauler to send food waste to composting or AD
- Send meat and bones to rendering services
- On-site composting

In-vessel Composting at Restaurants



Earth Tub
system behind
LEED-certified
Hot Italian Pizza
and Panini Bar
in downtown
Sacramento



Hot Rot compost system at Sierra Nevada Brewery & Restaurant in Chico.

Schools and Universities





Options for Schools & Universities

- Food Waste Prevention
- Establish on-site management (e.g. small AD or composting)
- Establish sustainability goals
- Educational Opportunities
 - Harness student volunteers and enthusiasm
 - Build into curriculum
- Contract with a hauler to provide on-site collection of source-separated food materials for composting or AD

Food to Flowers Lunchroom composting program (San Francisco)



UC Berkeley and Lean Path



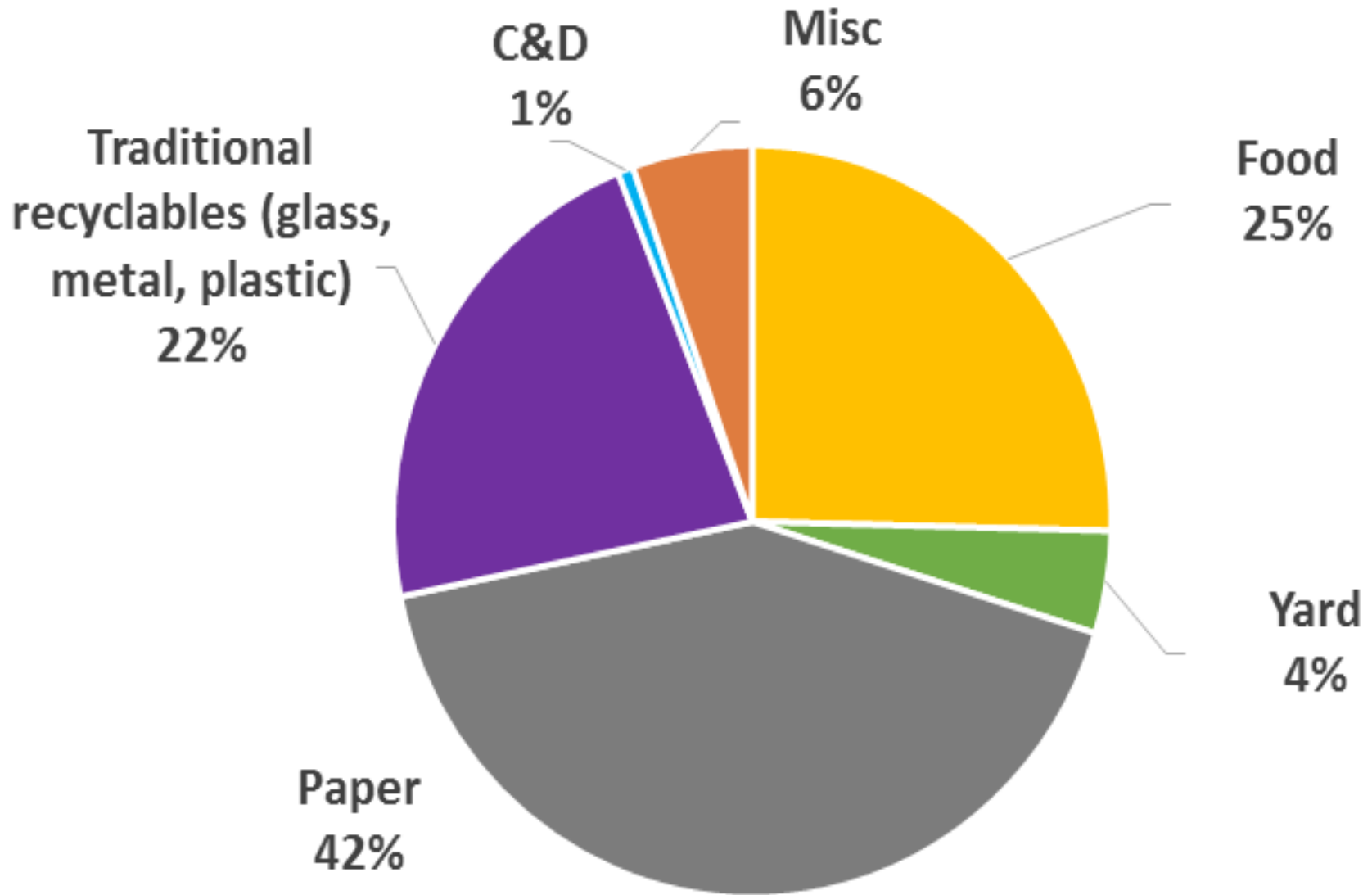
Venues & Stadiums

(arenas, stadiums, convention centers)



Raley Field,
*City of West
Sacramento*

Venues & Stadiums Disposal Characterization





Options for Venues and Stadiums

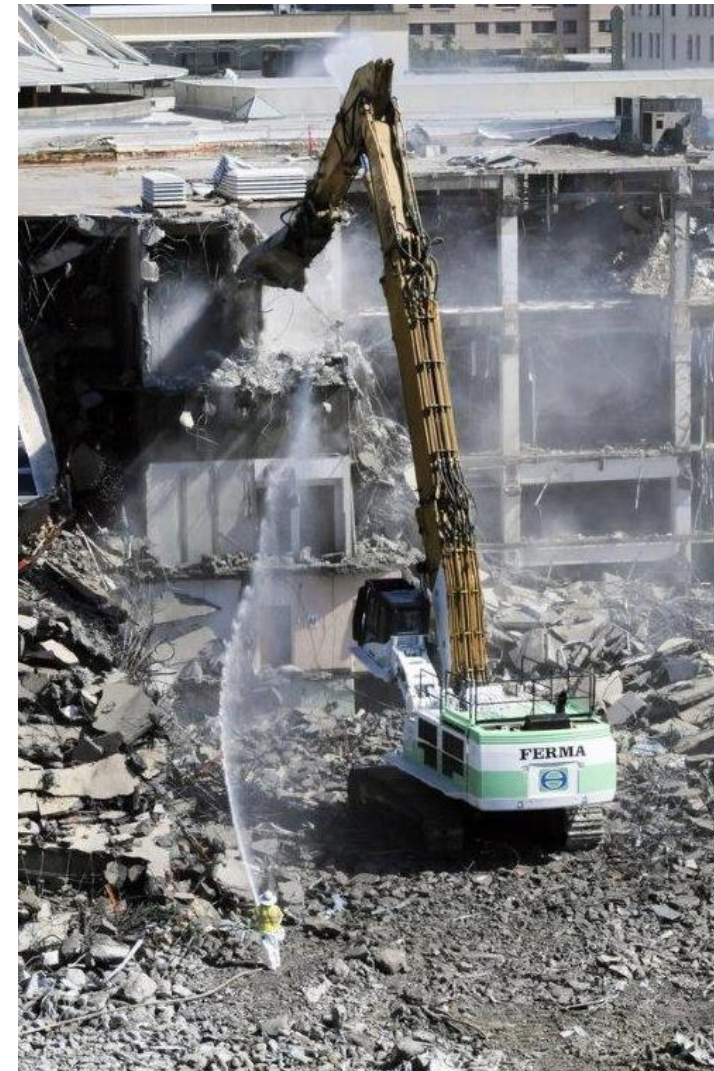
- Donate edible food to food rescue organization
- Establish on-site management (e.g. small AD or composting)
- Contract with a hauler to provide on-site collection food waste and green material



Construction & Demolition

- Lumber Included in MORE
- CALGreen requires 50% diversion for new construction and certain additions or alterations to existing buildings
- Local C&D ordinances may require higher diversion than CALGreen
- CALGreen is enforced by local building dept.

Construction & Demolition



Over 98% of Sacramento Downtown plaza construction project was recycled in 2015



Questions/Comments



Programmatic Needs Assessment



Programmatic Needs Assessment Tool (PNAT)

- ▶ Primary goal of 1826 -- divert organics from landfills:
 - Businesses required to recycle the organics they generate
 - Jurisdictions must have organic recycling program that meets the needs of its businesses
 - Jurisdictions required to annually provide education and outreach, then monitor annually the regulated businesses

- ▶ Organic recycling programs vary by Jurisdiction, Type of generators/material types, Type of infrastructure



Programmatic Needs Assessment Tool (PNAT)

▶ Information CalRecycle will use to determine adequacy of program implementation

- Information obtained during annual reviews,
- Annual Report information
- Other data, such as monitoring information

▶ Jurisdiction's assessment of organics recycling services/programs using PNAT

- Not prescriptive
- Not a checklist
- Good indicators for Jurisdiction Review (basis for CIWMP Enforcement Policy Part II)



Programmatic Needs Assessment Tool (PNAT)

A	B	C	D	E	F
What generators meet the threshold?	What types of organic materials are generated/are the materials diverted?	What existing types of programs are available in the Jurisdiction?	What programs do generators need?	What program(s) can the jurisdiction add to meet generator needs?	If the jurisdiction is not able to provide programs, what are the barriers and what is the jurisdiction doing to address the barriers?



Jurisdiction 1

- ▶ Generator type:
 - Grocery Stores: large chain store vs independently owned store

- ▶ The following describes this jurisdiction's existing programs:
 - Exclusive franchise hauler for residential and commercial sectors
 - Mandatory commercial organic recycling program
 - Self-haul or back-haul food waste or green waste by businesses
 - Food rescue organizations available
 - Landscapers serving businesses
 - On-site small scale composting
 - Donation of food waste/food scrap to farm as animal feed



Jurisdiction 3

- ▶ Generator type:
 - Grocery Stores: large chain store vs independently owned store
- ▶ The following describes this jurisdiction's existing programs:
 - Exclusive franchise hauler for residential and commercial sectors
 - Green waste collection (no food waste) to multifamily complexes
 - On-site commercial green waste collection service (no food waste) to businesses
 - Food rescue organizations are available
 - Self-haul or back-haul food or green waste by businesses to a recycling facility
 - Landscapers serving businesses
 - Donation of food waste/food scrap to farm as animal feed



Jurisdiction 6

▶ Generator type:

- Grocery Stores: large chain store vs independently owned store

▶ The following describes this jurisdiction's existing programs:

- Jurisdiction is in remote area (rural) that is not exempt by law
- Residential franchise hauler offers residential green waste collection to MFDs
- Food rescue organizations are available in more populated areas
- May have livestock farmers taking a limited amount of pre-consumer food waste from businesses
- Back-haul/Self-haul food waste or greenwaste by businesses
- May have biomass facility operating intermittently depending on energy markets that accepts clean wood waste and woody yard waste
- Landscapers serving businesses



Comments/Questions?