



PaintCare

The Oregon Paint Stewardship Pilot Program

Paint Stewardship – Next Steps for California

October 14, 2010



**Alison Keane,
ACA and PaintCare**



**Mark Kurschner
Product Care**



Industry Implementation and Oregon's Paint Program as a Model



Background

- **Paint identified as the #1 issue by cost and volume for HHW Programs**
- **PPSI formed w/facilitation by Product Stewardship Institute**
 - capable of effectively coordinating multi-stakeholder and multi-state approach to the issue
- **ACA joined PPSI in 2003**
 - Coordinated approach versus state-by-state approach
 - Share information with state and local governments
 - Gain better information from non-industry stakeholders
- **Goal was to find a resolution**
 - Status Quo not adequate



Background Cont.

- **1st PPSI MOU in 2005 for pilot projects**
 - Projects address the potential to eliminate or lower leftover paint volume and cost and data gaps
- **2nd PPSI MOU in 2007 following ACA Board Resolution**
 - Develop a nationally coordinated system for the management of post-consumer waste paint
- **Key Elements**
 - Consumer Education
 - No Mandatory Retail Take-Back
 - Cost Effective
 - Industry Operated Product Stewardship Organization
 - Market Based Financing
 - Begin w/Pilot State
- **Legislation need for level-playing field and anti-trust protection**



Key Elements of Legislation

- **Provides for an industry Stewardship Organization**
- **A Paint Stewardship Assessment fee to be added to the price of paint to fund the program**
- **Education and Outreach to consumers**
- **Voluntary (not mandatory) retail take-back**
- **Partnering with existing government collection sites**



Key Elements of Legislation

- **Plan submitted to CalRecycles**
 - **Participants**
 - **Brands**
 - **Collection sites**
 - **Disposition and hierarchy of paint**
 - **Reuse, recycling, fuel blending, proper disposal**
 - **Budget and Assessment Rates**
 - **Communication Strategy**
- **Annual Report and Financial Audit**



ACA

- **The American Coatings Association is a voluntary non-profit association, originally organized in 1888**
- **ACA represents approximately 250 manufacturers, distributors, raw material suppliers to the industry, and individuals working in the industry**
- **Serve as advocate, compliance assistance resource and community liaison**
 - Legislative
 - Regulatory
 - Judicial



PaintCare

- **Incorporated October 2009**
- **Non-profit 501(c)(3)**
- **Wholly owned by ACA**
- **Operated by Board of architectural paint companies**
- **Hired Product Care as Program Manager**

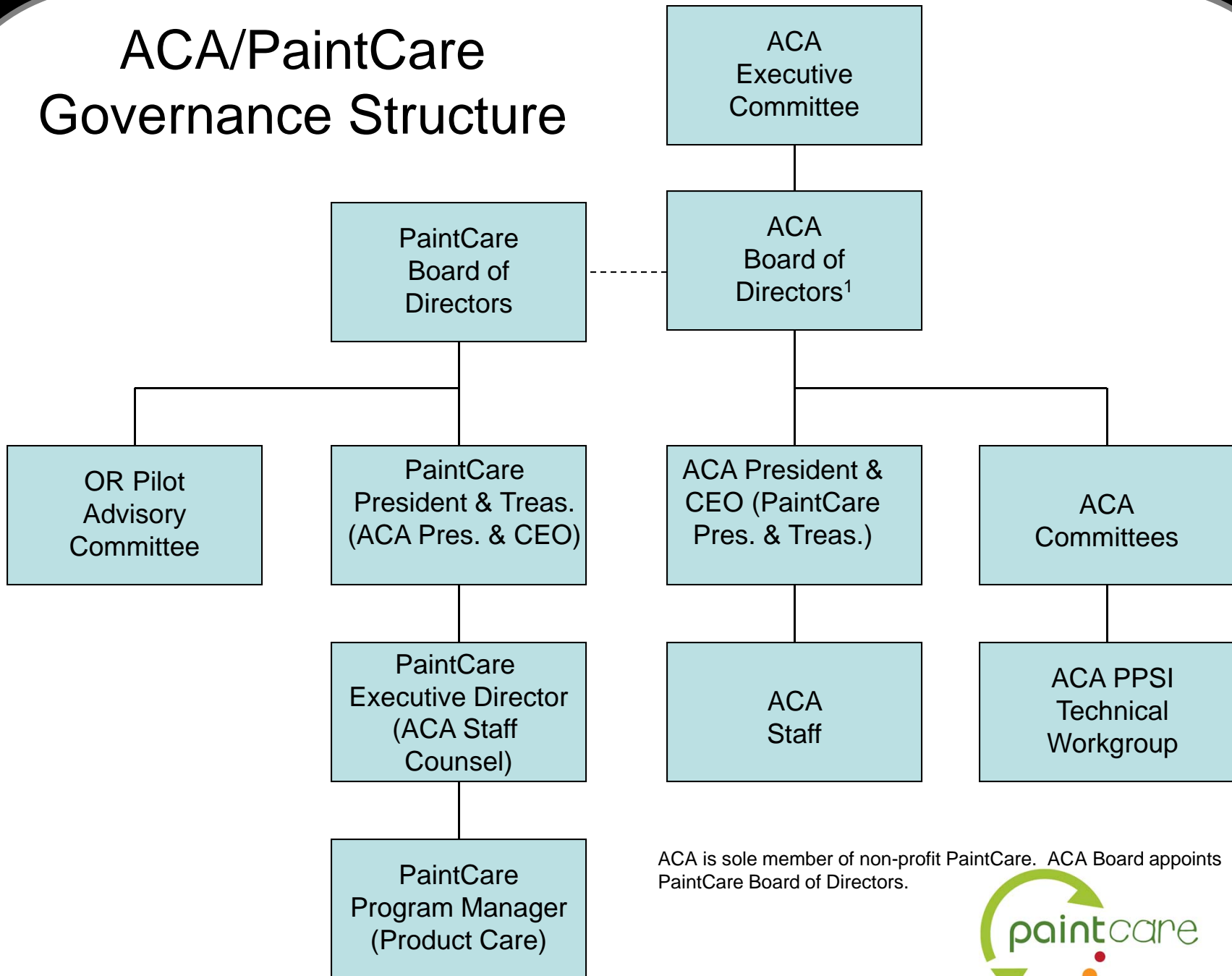


Product Care

- **Based in Vancouver, BC, in operation since 1994**
- **Not-for-profit industry association dedicated to the management of stewardship programs**
- **Currently managing all or part of 5 paint stewardship programs in Canada as well as other programs**
- **Has program coordinators in each province/state**
- **Objective: to operate stewardship programs that are both efficient and effective.**
- **Has established Product Care-USA, a 501c3 non-profit with an office in Portland**



ACA/PaintCare Governance Structure



ACA is sole member of non-profit PaintCare. ACA Board appoints PaintCare Board of Directors.



Model Program Elements

- **Manufacturer**

- Registers as a PaintCare participant
- Reports sales and pays PaintCare a PaintCare Recovery Fee for every architectural paint container sold in Oregon
- Adds PaintCare Recovery Fee to wholesale cost of paint to distributors and retailers

- **Retailer**

- Checks OR DEQ website to make sure producer is part of PaintCare
- Adds PaintCare Recovery Fee to the final purchase price of paint
- Provides point of sale PaintCare educational materials
- Acts as a collection site for return paint (on a voluntary basis)



Model Program Elements, cont.

- **Household Hazardous Waste Programs**
 - Acts as a collection site for return paint (on a voluntary basis)
 - Permanent or events
 - Transportation and ultimate end-of-life paint management provided by PaintCare
 - Reuse, recycling and other management methods may also be contracted for
- **Consumer**
 - Pays PaintCare Recovery Fee when they buy new architectural paint in Oregon
 - Drop off unused, leftover paint to any of the PaintCare collection sites in Oregon



Model Program Elements, cont.

- **PaintCare**

- Files Program Plan on behalf of manufacturers
- Contracts for collection, transportation and end-of-life management of program products
- Provides education and outreach materials and media
- Reports annually on program elements to state and pays administration fees

